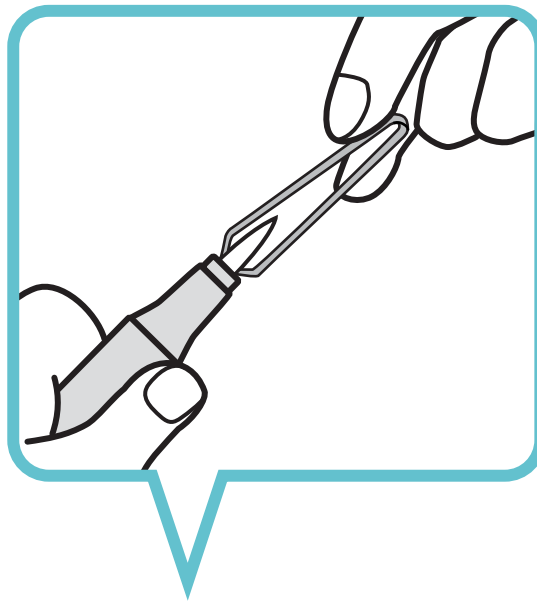
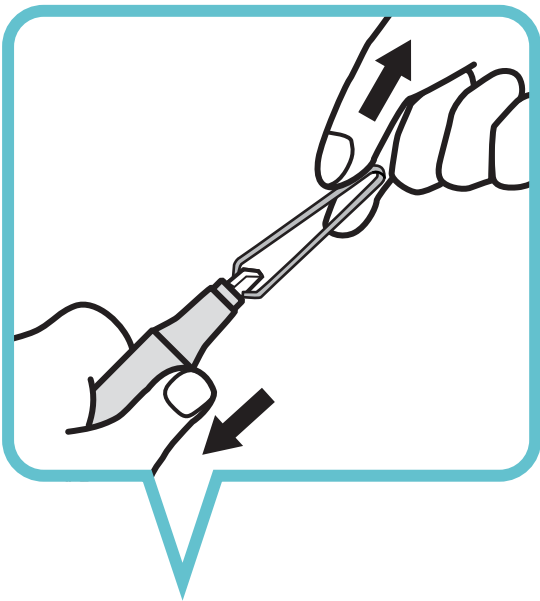


How to Replace Nibs on your Copic Markers

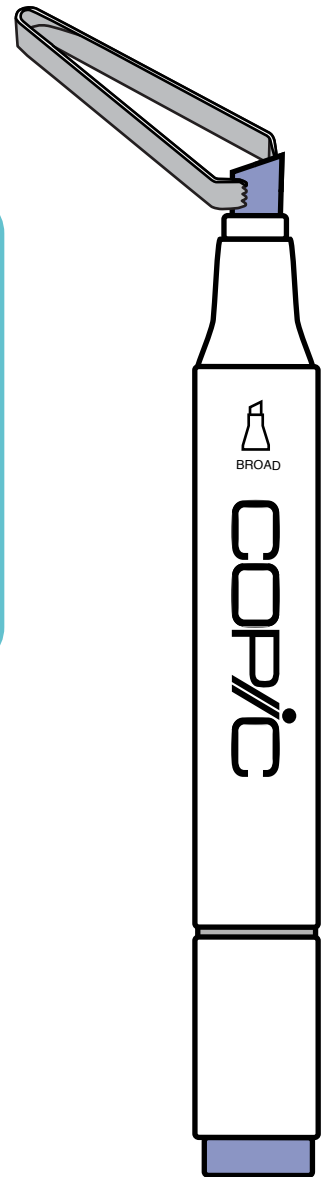


When you are refilling your markers this is also a good time to replace damaged nibs, so keep a supply of replacement tips and a pair of tweezers. Copic tweezers have little gripping teeth to get hold of the nibs better. There are nine styles of Copic interchangeable nibs, from broad to calligraphy, that provide greater freedom of technique in your renderings.



Using the tweezers, pull the large nib out of the marker. Insert the new nib slowly back into the marker. The ink will wick from the inside out to the end of the nib. This may take a few minutes.

Brush Nibs: Be sure to grip the nib firmly at the base and pull with steady pressure to avoid damaging the nib.



Refurbishing Nibs: If the nib is gummed up, soak in blender solution until it has cleared.



Be Careful!

- Frequent removal of nibs will cause poor contact with ink cartridge. Only remove nibs when they need to be replaced.
- Do not use damaged nibs.

For questions or comments contact us at Imagination International, Inc. Copic Markers (541) 684-0013, or at www.copicmarker.com
Copyright © 2010 Imagination International, Inc. All Rights Reserved

