

using ABS2 Airbrush System



The ABS 2 Set includes:



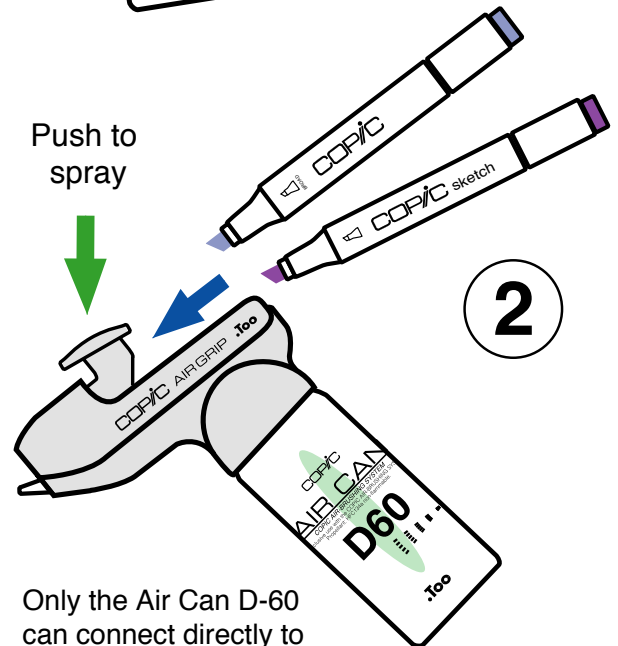
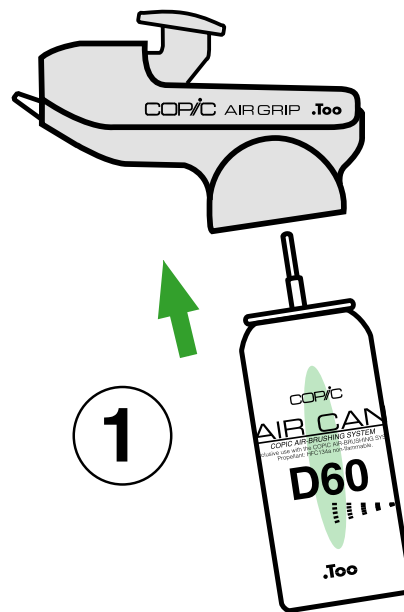
Air Grip



Air Can D-60

1. Remove the cap from the Air Can D-60 and screw the Air Can into the base of the Air Grip.

2. Insert your favorite COPIC or COPIC Sketch pen into the Air Grip as shown, with the broad nib pointing up, then press the finger pad to spray.



Only the Air Can D-60 can connect directly to the air grip.

COPIC Airbrush System Warning



- Use in an area with good air circulation. If using in an area of poor ventilation, use a facemask.
- COPIC Markers are alcohol based, keep away from open flame.
- Do not spray on people or animals.
- Air Cans are under pressure- do not puncture.

For questions or comments contact us at Imagination International, Inc. COPIC Markers (541) 684-0013, or at www.copicmarker.com

Copyright © 2008 Imagination International, Inc. All Rights Reserved

